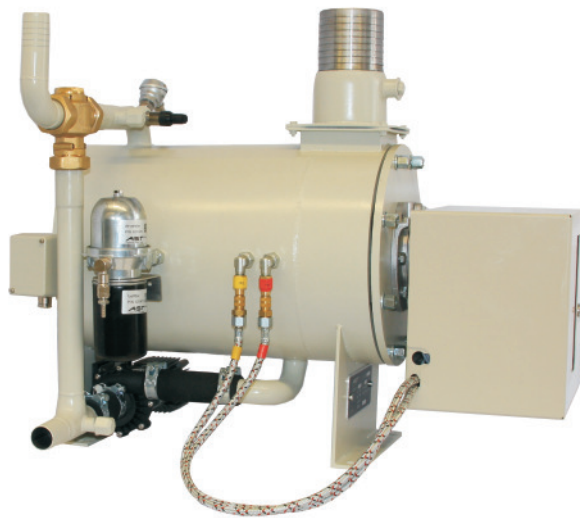


ASTop Idle System K35/50

Independent fuel operated engine heating system for diesel locomotives to reduce engine idling needs.

Saves up to 15,000 US gal diesel per year and locomotive.

Extends AESS shutdowns to 72 hours and allows AESS to operate year-round.



System key data:

- 50 kW / 170,000 BTU heat output to maintain ideal engine temperature and frost protection year-round
- operating ambient temperature range: -40°C (-40°F) to +50°C (+122°F)
- extra low fuel consumption: 0.13 to 1.32 US gal/h (92% efficiency)
- physical dimensions / weight: LxWxH 30x20x30 in, 180 lbs.
- control system with GSM monitoring and AESS interface
- BLDC coolant circulation pump: 115 l/min / 30 gal/min and low-NOx blue flame burner, NOx: < 35 ppm

ASTop Idle System K35/50

System features:

- low annual maintenance
- no moving parts, >20 yrs lifetime, silent operation
- low battery draw: 120 W avg. at 64VDC
no external AC plug-in required for shutdowns up to 72 hrs
- water and ambient temperature monitoring
- optional cab heater running with antifreeze

Example installation:



fuel operated heater



control box



*cab heater
(option)*



system terminal

EPA Smart-Way verified technology for locomotives
Apply for EPA grants to fund up to 40% of the investment

