

ABrake Sense Unit

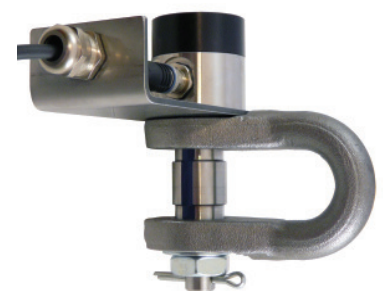
Locomotive parking brake sensing unit to **inhibit unneeded AESS engine starts for low main reservoir pressure** and to extend AESS engine shutdown times.

Measures the correct parking brake applied force at the brake cylinder lever. Increases safety of a parked locomotive.

Allows to detect locomotives moving with handbrakes applied.

Sensor unit key data:

- stainless steel load pin with safety anchor shackle
- 1/1 replacement for standard locomotive handbrakes
- pin diameter 1 $\frac{3}{20}$ inch (29,2 mm)
- measurement range 0...11,240 lbf (50 kN)
- safe overload 150%
- cable protection and conduit fitting
- pin and clevis with anti twist guard
- load signal output 4...20 mA
- supply voltage 12...30 V
- accuracy class 1 % F_{nom}



ABrake Sense Unit

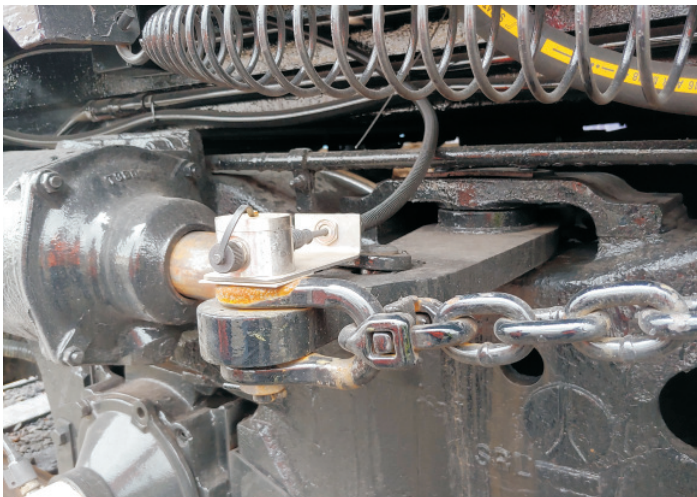
A Brake Sense Unit

AAR AESS Spec. S-5502:

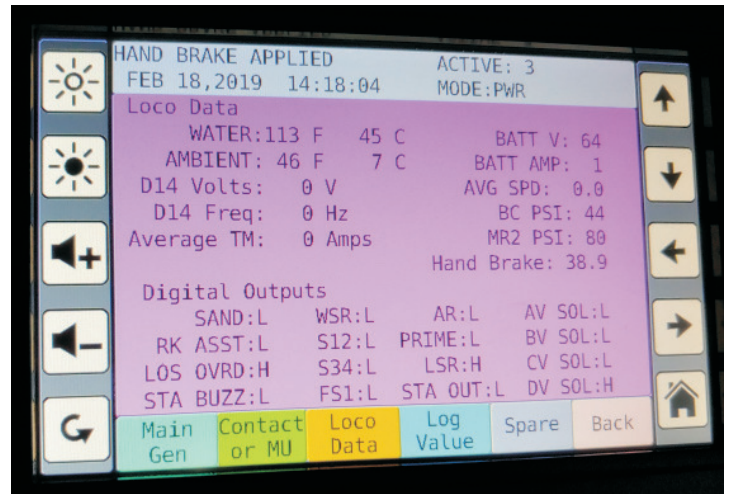
With sensing a positive parking brake applied signal the main reservoir 2 pressure decrease to 15 psi above brake pipe setting is **no longer** a required engine start-up parameter if

- the unit is on trail operation
(isolation switch in RUN or ISOLATE/START/STOP)
- if the unit is on lead operation and the isolation switch is in ISOLATE/START/STOP

Example of use:



MP15AC equipped with A Brake Sense



AESS sensor readings

